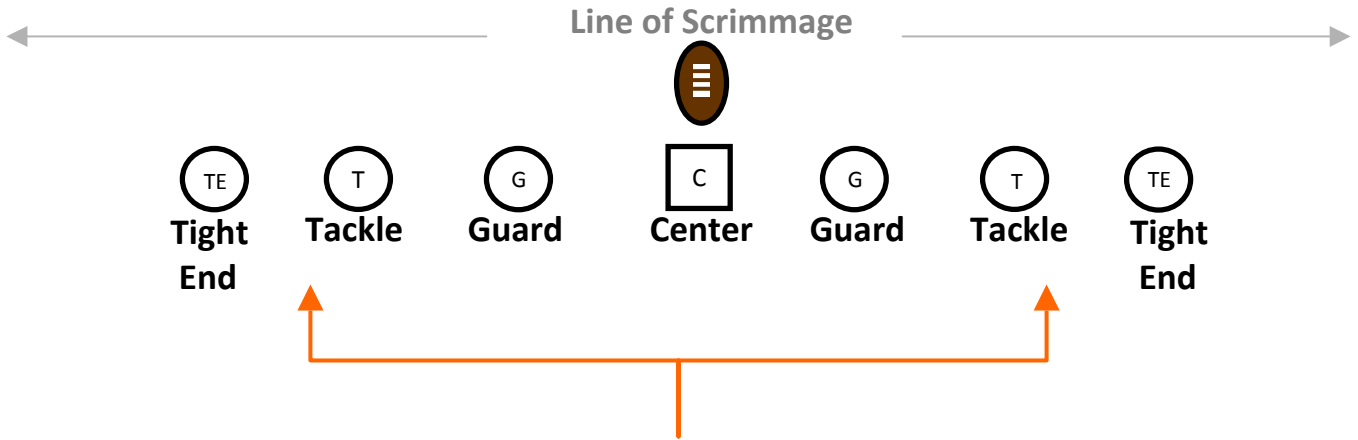




# HOMework

## OFFENSIVE LINE

KNOW YOUR POSITION!



The Interior Line is made up of...

### Center

The center combines Power, Speed, Size, and Intelligence. He is the leader of the interior line.

### Guards

Are Big, Powerful, Quick, Agile, Smart, Key Blockers that must do their job in order for the team to score. Guards line up next to the Center.

### Tackles

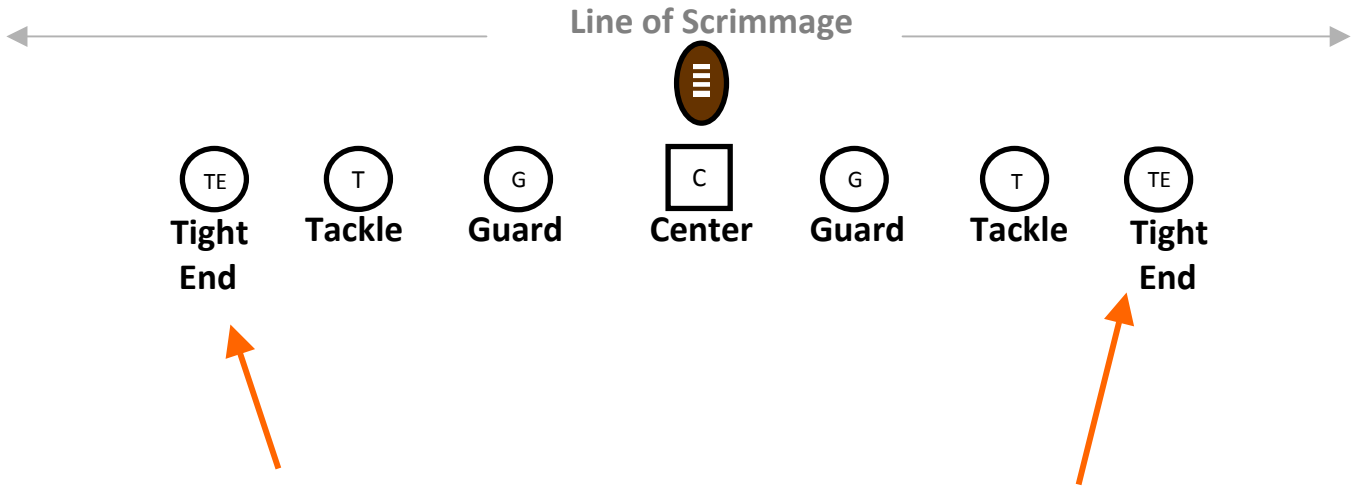
Very similar to the Guards Tackles are Big, Powerful, Quick, Balanced, intelligent, and are an essential blocker who must take on the defense in order for the offense to score. Tackles line up next to the Guard.



# HOMework

## OFFENSIVE LINE

KNOW YOUR POSITION!



The Exterior Line is made up of...

### Tight Ends

Tight ends are selected because they have demonstrated the ability to block, both on the line and in the open field, are agile and strong, capable of handling defensive tackles on their on, capable of being a lead blocker, and when called upon is able to run a route and catch passes. Tight Ends Line up outside the Tackle. They may line up together on one side and they may line up one step off the line.

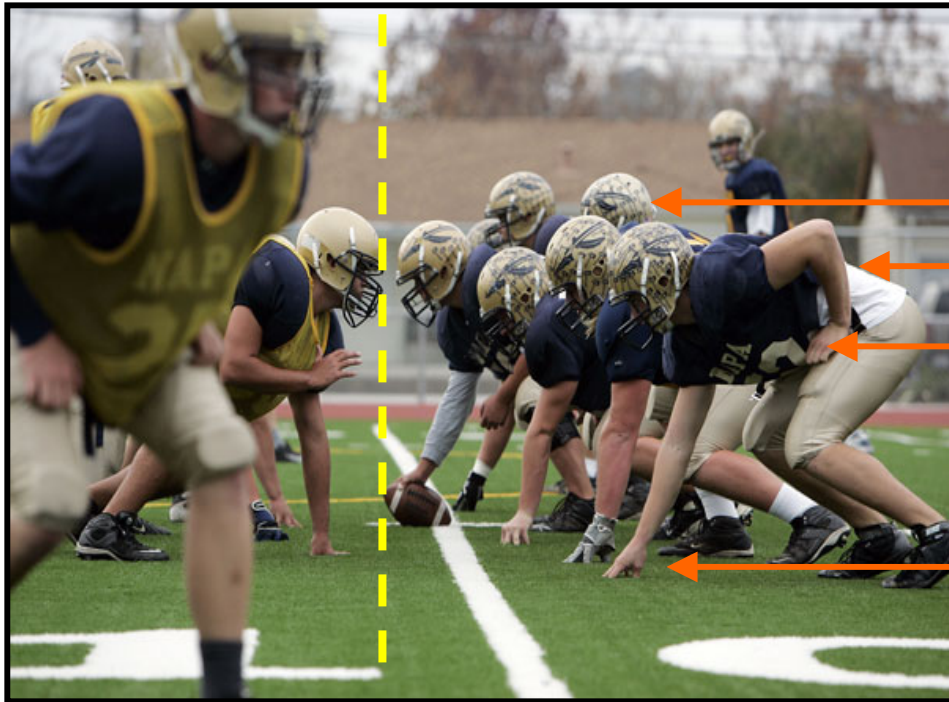
### BOTTOM LINE:

You have to be **SMART, FAST, and POWERFUL** to be a Lineman!



# HOMework

## OFFENSIVE LINE UP



**KNOW & Listen for the Snap Count**

**Head UP**

**Back Level**

**Arm Ready**

**Lean Out on Hand**

### HOW TO:

- The point of the football is the Line of Scrimmage (dotted yellow line in the photo above)
- OFFENSE come to the line
- Center lines up over the ball
- Everybody Arms Up to the sides
- Spread out until your finger tips touch the guy next to you
- Drop your Arms and get into the Breakdown/Ready Position
- Know where the play is going
- Look at WHO you will Block
- Think about HOW you will Block him
- Know and Listen for the SNAP COUNT (DON'T MOVE UNTIL YOU HEAR IT)
- Be FASTER Than the other guy
- Thrust your arms out, Grab Buckles and Laces
- Stay Low, Drive Up and out with your arms, Pump your Legs
- Take Short Choppy Steps
- Don't stop till you hear the whistle



*Fire Off the Line! Get your hands on the defender and take control!*